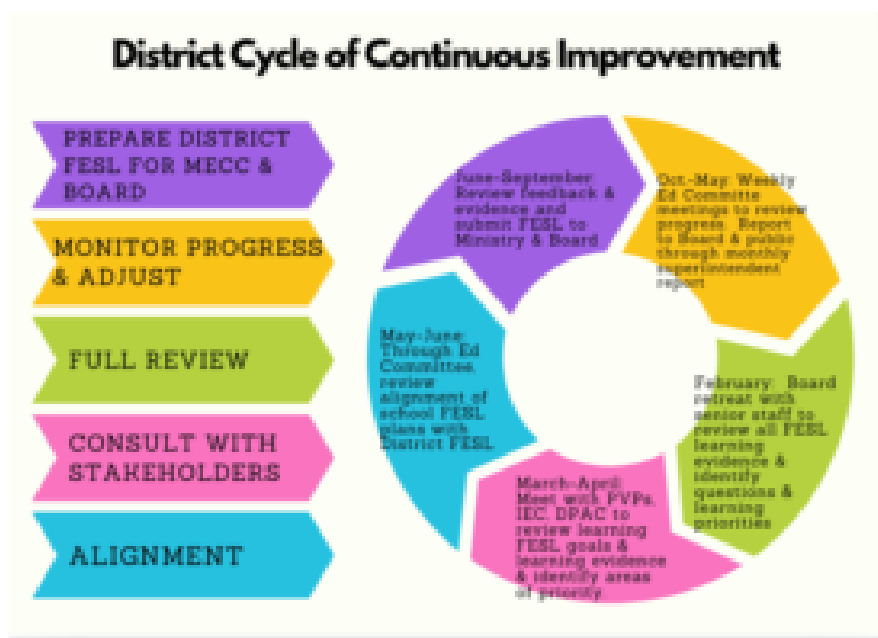


Framework for Enhancing Student Learning (FESL)

** click [here](#) to see the full Framework Plan

Student Learning - Intellectual Development



Continuous Improvement Cycle in Schools



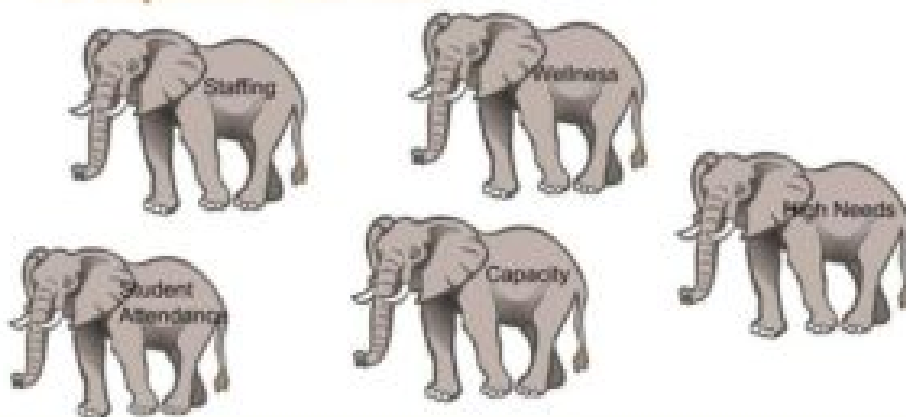
Conclusion

Throughout this continuous cycle of planning, monitoring progress and responding to learning evidence, we have been reflecting on the overall strengths and challenges in our District. We are encouraged by our robust resources and systemic approach to SEL. The District SEL team, which liaises with the School-Based Teams on a regular basis, has laid the foundation for constructive intervention for long-term student and adult well-being. Through our Learning Support Fund model, we have provided significant resources to schools that enable the school-based team to collaborate on the strategic allocation of those resources based on class reviews and student needs. Of great pride is the significant progress we have made over the last several years to close the gap between Indigenous and non-Indigenous students when it comes to the graduation rate. Of particular note is last year's 19% increase in the 6-year Indigenous grad rate. When it comes to our Early Learning goals, we have been a provincial and regional leader in piloting programs such as Seamless Day K and building up extensive BASC and childcare services. In many aspects, our senior team and Board are also providing leadership provincially and especially in the North. This ranges from tackling workforce development issues to providing ancillary clinical support to Fort Nelson District to sharing our policies, procedures and senior staff expertise with our northern colleagues.

We are also aware of the significant challenges we face. Similar to the provincial trend, we are concerned about the decline in numeracy results. To address this, we have been rolling out an anchor program for numeracy (Mathology) that aims to address the inconsistency in

pedagogical approach and use of resources. We have also allocated additional coaching time for numeracy and mandated specific goals & objectives for every school to develop and monitor. We are also concerned about the success rate of our youth and children in care. With the new allocation of a district social worker to liaise with schools and families, we are anticipating a more concerted approach to supporting these students. While it is not new, the challenges we face in staffing - both teacher and support staff - has reached a crisis level that is definitely impacting our capacity and program delivery in every aspect of the organization. Thanks to various initiatives and collaboration with MECC and BCPSEA, we are hopeful about incremental improvements, but also recognize that these shortages will continue to endure for the foreseeable future.

The elephants in the room



Student Learning - Human & Social Development

Circle of Courage: Positive Youth Development Workshop

- [View Fullscreen](#)

Student Learning - Career & Skill Development

Experiential Learning: Mushroom Hunting with Gr 1 Class at Margaret 'Ma' Murray Community School

Mr. McColm challenged the families to go mushroom hunting on the weekend after mushrooms were found growing in our flower beds. Families explored their yards, acreages and even the Cactus Trails on the weekend and brought their mushrooms into the classroom. They became scientists as they examined the mushrooms, placed them on tables, compared/contrasted and then put them into the oven to dry.

Kids were amazed at the different textures, smells, etc. and the different parts of the mushrooms.



The plan going forward will be to expand and compare the life-cycle of a mushroom to other living things, artwork of course and possibly a cooking project.

Sheer joy for these kiddos and such buy in with families. Who knew mushrooms would be so captivating!

Kathy Scheck, Principal, Margaret 'Ma' Murray Community School

People Development

Northern BC Practicum Awards Overview

[View Fullscreen](#)

Advantages of living and teaching in the North

[View Fullscreen](#)

CyberSecurity

Please see attached report on how SD60 is responding to both Board Policy and Ministry of Education & Child Care recommendations on cybersecurity and internet use. Thanks to the leadership and work of our tech department, our district is well-positioned to mitigate the most serious impacts of cybersecurity threats. There is no such thing as a 100% secure system, particularly in the context of staff use of email, software, etc. However, beginning this November, the District is rolling out an information and awareness campaign that will reach all staff and capture any new staff in the future.

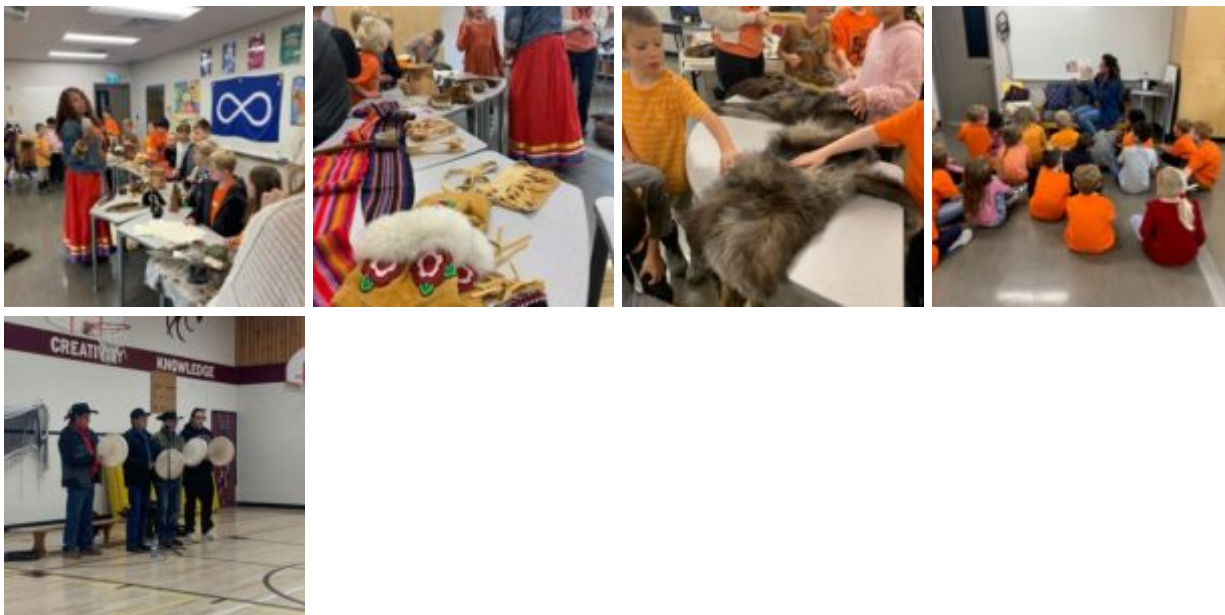
- **Policy 4001** - “The Board recognizes the educational opportunities provided through the use of the Internet, local network, and related technologies. Students and Staff are to use the internet resources provided to them in a secure and ethical manner that enables and enhances educational opportunities. Digital Citizenship is appropriate, responsible behavior with regard to technology use.”

Truth & Reconciliation

Finch Celebrates Truth & Reconciliation Day on Friday, Sept. 27th

Throughout the day and culminating in a school assembly with the Doig First Nations drummers, CM Finch students enjoyed hands-on activities and stories related to the First Nations history in this area.

Below are some pictures from the displays and the assembly.:



Unveiling of NPSS Indigenous Display Case

On Thursday, October 10th, NPSS administration as well as the members of the Indigenous Education Council and senior staff gathered in the high school foyer for the unveiling of the Indigenous Display Case. Profiling artifacts and stories from the Doig, Halfway and Blueberry First Nations as well as from the Métis community, the display is an aesthetic and

educational reminder of our local history.



Elder Gerry Attachie carried out the unveiling and spoke of some of the history of his people in the area.

“Take 3”

École Central Elementary School of the Arts

[View Fullscreen](#)

Lynne Cote-Aubin, Principal, École Central Elementary School of the Arts

Upper Halfway Elem-Jr Secondary



Gym Grand Opening - Monday, October 7, 2024



Jaclyn Gieni, Principal, Upper Halfway & Wonowon Schools

Taylor Elementary School

The District Cross-Country Run was held on the District of Taylor walking trail at the Lone Wolf Golf Course on October 2nd, 2024.



Thanks to all the amazing volunteers this event was a huge success with over 250 runners competing from grades 1-9.



Special thanks for Mrs. Austin for organizing the event and all the volunteers, which included Taylor School staff, parents, community members and also staff from the School District Board Office. Thanks to Lone Wolf Golf Course for their help in setting up the race.



While we had some light snow in the morning, by the afternoon, the temperature was perfect for a run!



Nancy Maxfield, Principal, Taylor Elementary School